

Les yeux levés \_\_\_\_\_ vers

The first line of music is written on a treble clef staff in 2/4 time with a key signature of two flats (B-flat and E-flat). The melody consists of quarter notes: G4, A4, B-flat4, A4, G4, F4, E-flat4, and D4. A slur covers the last four notes (F4, E-flat4, D4, and the final D4).

la splendeur de tes sommets\_ ,

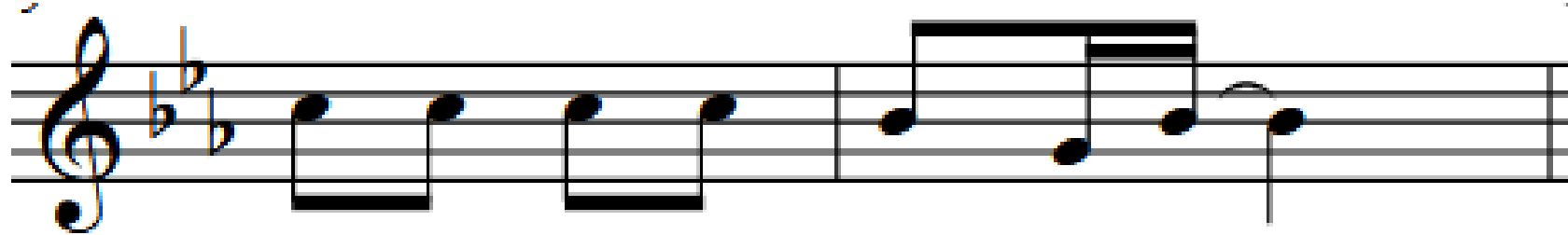
The second line of music continues the melody on a treble clef staff. It consists of quarter notes: D4, E-flat4, F4, G4, A4, B-flat4, A4, and G4. A slur covers the last four notes (B-flat4, A4, G4, and the final G4).

les bras dressés \_\_\_\_\_ de-

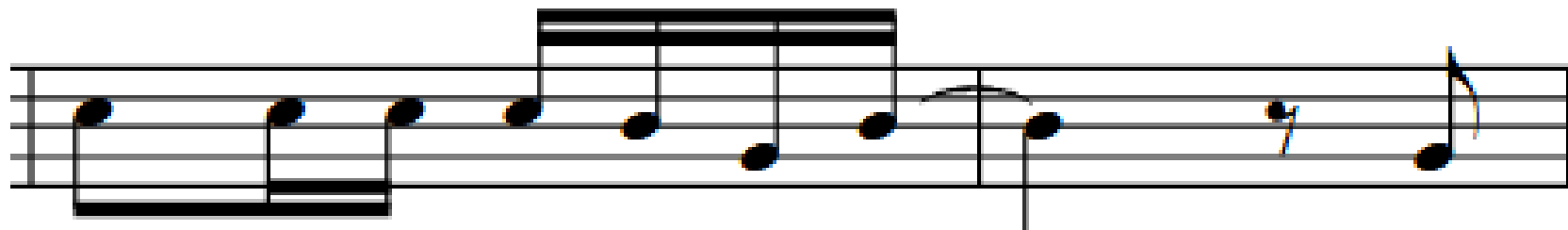
The third line of music continues the melody on a treble clef staff. It consists of quarter notes: G4, A4, B-flat4, A4, G4, F4, E-flat4, and D4. A slur covers the last four notes (F4, E-flat4, D4, and the final D4).

puis tes diver - ses vallées\_\_\_, E-

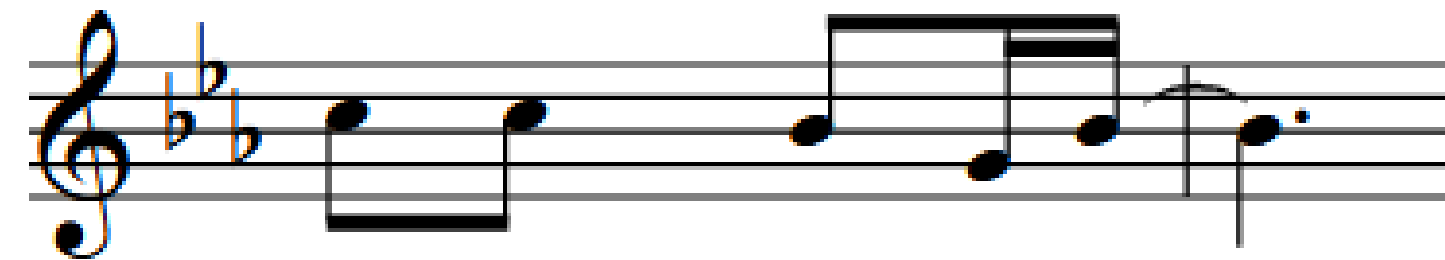
The fourth line of music continues the melody on a treble clef staff. It consists of quarter notes: D4, E-flat4, F4, G4, A4, B-flat4, A4, and G4. A slur covers the last four notes (B-flat4, A4, G4, and the final G4). The line ends with a double bar line.



-glise dans les Hautes-Alpes,



Ou-vre de nouvelles voies\_, ac-



-cueille et ac-compagne,

